

UIM

Rule Changes 2025

(Circuit)



UIM Rule Changes 2025

Circuit - 200

201.09 - THE TIMEKEEPERS AND STARTER

...

- *all activities on the water must be timed (free practice, time practice, qualification, heats, races etc.)*

...



FINNISH SAILING AND BOATING FEDERATION



1922 - 2022



205.02.02 - TEST ON CONSUMPTION OF ALCOHOL

Competitors, team members and *race* officials shall not be under the influence of alcohol *on water, at pit area or launching and start areas* during the entire racing event *which starts from opening of race office for registration of drivers until end of activities on water for class in question*. Testing when carried out shall be by using an alcoholmeter.

...



UIM Rule Changes 2025

200

205.05 - IMMERSION TRAINING

...

- *It is mandatory to wear a helmet of the same type (Open Face, Closed Face) as will be worn during racing.*
- *It is mandatory that the driver/pilot(s) wear the parts of the personal air system that will be worn in the boat.*

...



FINNISH SAILING AND BOATING FEDERATION



1922 - 2022



205.07.01 – FRONTAL HEAD RESTRAINT (FHR)

...

- *The FHR shall be of the lower profile design behind the head and use quick release tether fasteners.*

...

It is also mandatory to wear your FHR device during your Cockpit Evacuation / Immersion Training.
Disconnection of an FHR before attempting to exit a cockpit forms a part of the Immersion test training.



205.12 - LIFTING OF RACEBOATS

Boats intended to be craned in and out of the water, must have slings and hooks certified to lift minimum the double of the minimum boat weight.

The certification must be located on the slings and the hooks. All hooks used for lifting raceboats must be a closed hook type.

For the catamaran boat with equipped a reinforced cockpit, 3 points to fix the slings are mandatory:

- ***2 at the rear tunnel boat***
- ***1 at the upper position cockpit***

Lifting eyes on the raceboat must be bolted through the construction of the boat, with minimum 8 mm bolts and washers of at least 10 square centimeters area per lifting point.

No boat shall be lifted over people. Lifting a boat with a person on board other than for weighing will disqualify that boat and its driver.

No boat can be lifted higher than 0.5 m from the boat's trailer or the ground/water with any person on board, while weighing.



UIM Rule Changes 2025

200

205.13 – TESTING

Testing/**practicing** outside the race circuit and **in race venue three days before event and** before or after the authorised hours **during the event** is prohibited.



FINNISH SAILING AND BOATING FEDERATION



1922 – 2022



209 – POSTING OF THE RESULTS

...

If driver is refused entry by technical scrutineers, the decision and reason must be clearly stated with applicable rule number(s), signed by technical scrutineers, OOD and UIM Sports Commissioner and posted on the official notice board at least one hour before the first driver's briefing to allow a protest or correction.

...



307 – DEAD ENGINE START FROM A QUAY, A JETTY OR A BEACH

307.01

...

Boats should be drawn up stern first, engine dead, to a jetty, floating stage or beach. Boats without electric starts may have external aid from the jetty. Boats with electric starters may not be lifted or pushed by crew during the start procedure. ***One of the crew persons must keep the boat with two hands near to the starting jetty. Penalty for not doing so is the lost of two positions in heat results. Crew must hold the boat until start lights go off.*** GT-10 has start with running engine ***at idle*** with disengaged gears.

...

In GT10 previous heat results DNS, DNF, DNR, DSQ, DNQ and ACC do not give right to pole positions and boats with these results start to the next heat at the lower end of the jetty.



307 – DEAD ENGINE START FROM A QUAY, A JETTY OR A BEACH

307.02

...

Breaking this rule must result in one of the following penalties, which are disqualification, one lap penalty or a penalty of losing 2 positions, depending on the severity. ***Cards can always be given in addition.***

Disqualification is for maneuver, which causes accident or severe damage to other boats.

One lap penalty for getting clear advantage with cutting distance or blocking driving of other competitors.

~~Penalty of losing two positions for not leaving sufficient room to the left at the first turn buoy~~

Penalty of losing two positions for ***not keeping the relative starting lane to the first turning buoy and through completion of the first turn.***

...



311.02 – RACING IN HEATS

...

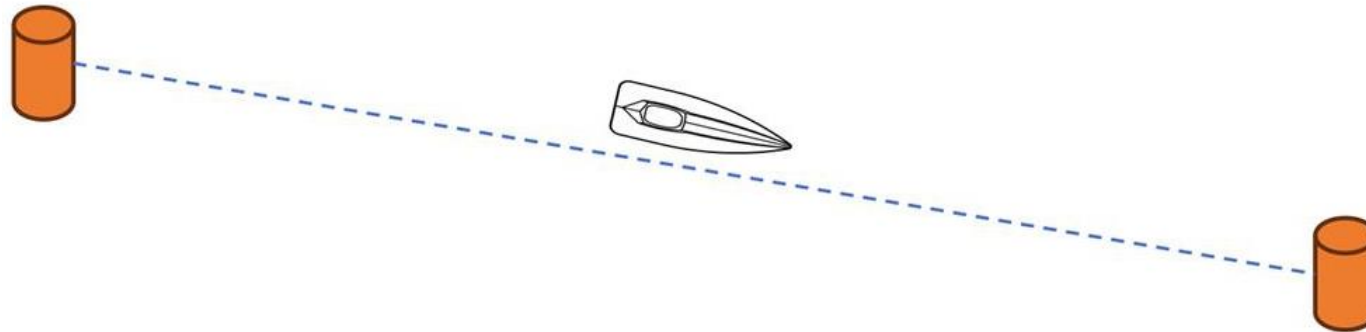
2. There shall be only one restart. In a *last* final heat, there shall be a second restart if the first restarted *last* final heat is stopped before 35% of the required laps have been completed.

...



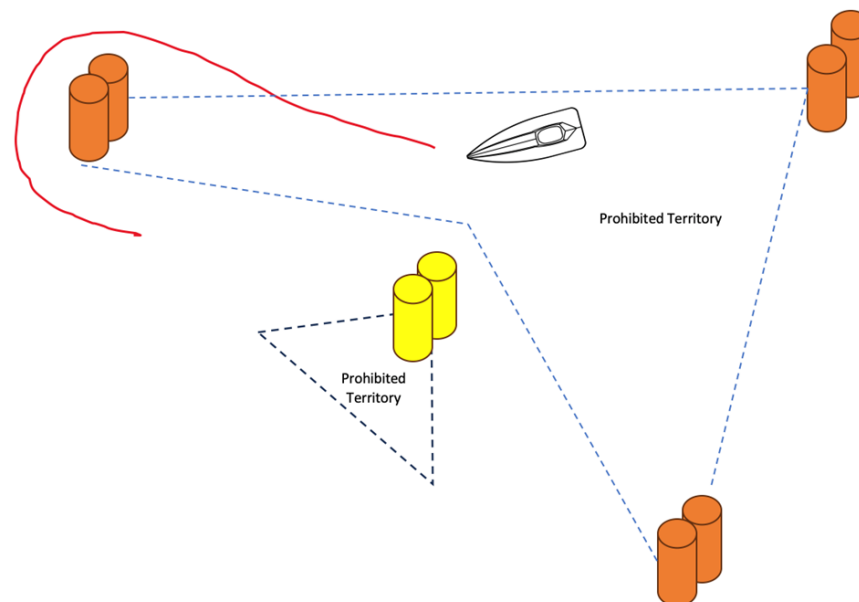
312.10 – DRIVING IN WRONG DIRECTION

During the race boats must not navigate in the reverse direction of the course. Breaking this rule will result in one or more of the following actions, which are disqualification, one lap penalty, yellow card or no penalty, depending on the severity. ***This race boat loses its “right of way” to other racers and must give way to others until correct direction is achieved.***



312.14 – PROHIBITED TERRITORY

Area in which a race boat can cross but loses its 'right of way' to other racers, must give way in this area and in return from this area to the defined race track.



312.15 – LONG LAP

For GT classes and for F4, race course may have long lap, called Joker Lap, if applicable for particular race course.

This is established with adding one additional buoy, which makes lap longer from normal race course lap at least for 200 meters.

Color of long lap buoy is white or half orange and half yellow.

Every driver must use this long lap at least once per heat or in case single heat race at least once per race.

Using Joker Lap is not allowed at the first full lap after start. Design of Joker Lap must be defined in race course homologation. Using of Joker Lap at the race must be mentioned in the race Advance Program.

When going from the normal race course to the Joker Lap and when returning to the normal race course, boat has no “right of way” and must give way to the boats using normal race course. At Joker Lap area boats follow normal racing rules. Penalty for not using mandatory Joker Lap is losing one lap.



402.01 – THE INTERNATIONAL JURY / *PROTEST JUDGE*

The Jury / *Protest Judge* hears any protest raised by a driver only.

1. COMPOSITION *OF THE JURY*

...

2. *PROTEST JUDGE*

A Protest Judge will hear the protests if so foreseen by the class rules. If not foreseen by the class rules, the UIM may, upon application by the relevant National Authority, appoint a Protest Judge for a particular event. Accommodation and reimbursement of travel expenses of the Protest Judge will be borne by the relevant National Authority and will be handled under the same rules/ in the same way as the reimbursement of the costs of the UIM Commissioner. The protest Judge must be named in the Advance Programme.

3. AUTHORITY AND DUTIES

The Jury / *Protest Judge* sits as long as the event lasts and hears all protests relating to that event. The Jury / *Protest Judge* must decide as soon as possible on all protests presented to it during the event.



402.02 – INTERESTED PARTIES

No member of a Jury / *Protest Judge* who has taken part as a competitor or Official in the race concerning which a judgement is to be given or knows himself to have directly or indirectly an interest in one of the parties involved, may judge the protest. However, *a Protest Judge* or a member of an International Jury shall not be disqualified even if one of the parties is from his/her NA.



509 – REINFORCED COCKPIT (...)

509.02 – PICKLE-FORKS

Pickle-forks must have four areas equal wide bands in the length, where from front to the direction back pickle-fork built from one layer of CSM glass fibre material with a maximal thickness of 1,5 mm, then increasing to two, three and four layers.

“The deformation must start at a maximum of 100 kg.

“The pickle fork must:

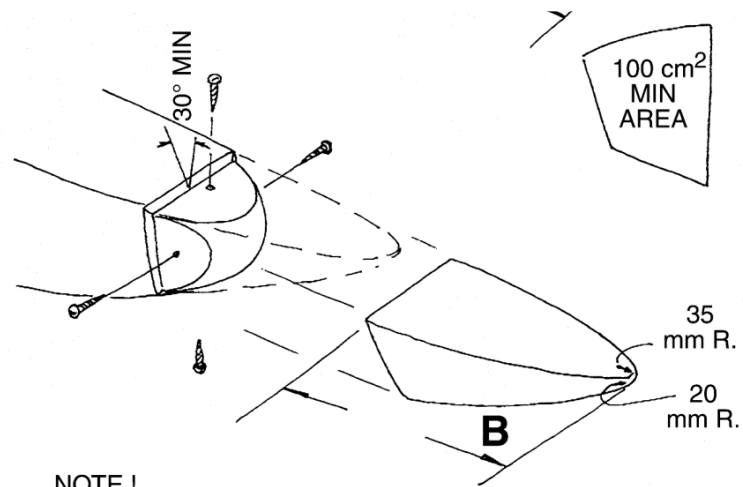
- be detachable and have nothing inside
- have a front end of minimum horizontal radius of 35 mm
- have of front end minimum radius of 20 mm in all other directions “According to the following drawings”
- ***Connection solution A from drawings is not allowed from 01.01.2025.***



509 – REINFORCED COCKPIT

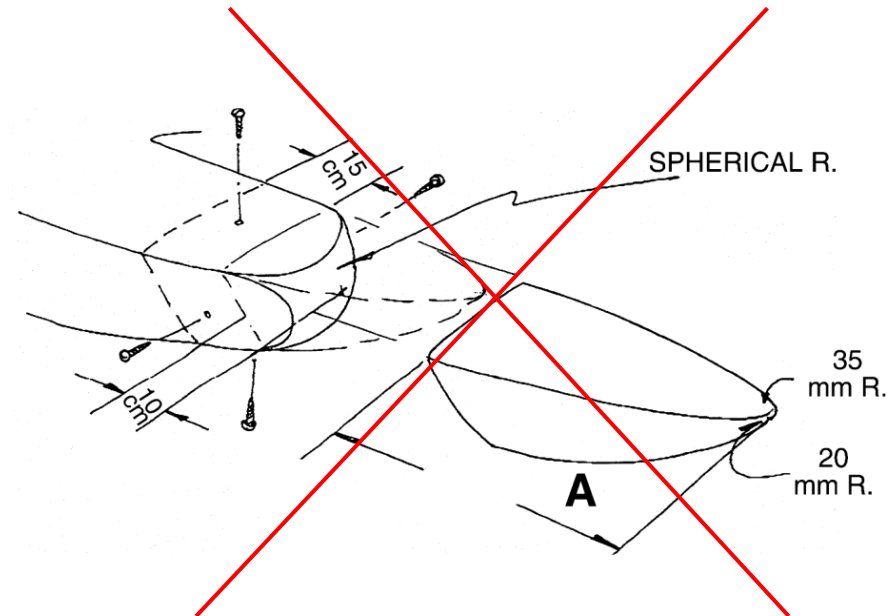
(...)

509.02 – PICKLE-FORKS



NOTE !

PICKLEFORK MUST DEFORM AT 100 kg MAXIMUM



550.05 – MINIMUM DIMENSIONS

...

3. The GT15 and GT 30 cockpits shall also have structural means to provide head/helmet protection such as a roll bar framework or “halo” design. The protective structure shall not inhibit driver egress from the boat.

In the case of “halo”-type solution, polycarbonate screen with minimum thickness 6 mm needs to be installed outside of structure, glued or bolted with bobbins of nylon, delrin, aluminium using min 6 mm bolts of stainless steel, nylock nuts, washers and maximum spacing of 5 cm. Top cover of the hull behind driver and roll bar must have structural strength of 15000 N.



UIM Rule Changes 2025

500

551 – CLASS GT10

551.1 HULL

551.1.01 – GENERAL

...

~~The driver must wear a FIA / SNELL with approval CM2007 or later approval helmet with a primary color (over 50%) of orange, yellow or red.~~

...



5. INTERRUPTED RACE - -PACE BOAT RULES

...

- 5.9** *If any boat drives too slow under yellow flag and cannot follow the boat in front (e. g.: distance is more than 100 meter), the OOD must warn the radioperson first. If the distance is still too much, the OOD must reduce the speed with the leading boat or give a permission to overtake the slow boat for those who are following.*



UIM Rule Changes 2025

F2

F2 RULES

A lot of changes, READ !!!! (Page 356->)

- Organization
- Event format
- Free practice, Warmup & Qualifying sessions
- Yellow flag situation
- Race control / Equipments
- Engines (Added Mercury 250)
- Boat Weight (APX + 25kg)
- SST200 extended 31.12.2026 (Optio 2027 if needed, must be approved by Comintech)
- Penalties
- Appeals
- Safety (Boat Hooking, Radio Person)
- Fines imposed to UIM; Buoy & Protest fees to organizer



FINNISH SAILING AND BOATING FEDERATION



1922 - 2022



UIM

Rule Changes 2025

(Offshore)



102 – WORLD CHAMPIONSHIPS

...

The UIM World Championship can be composed of a minimum of one event with three races and *can have* up to *five* rounds (Events) with two races each.

...



402.01 – THE INTERNATIONAL JURY / *PROTEST JUDGE*

The Jury / *Protest Judge* hears any protest raised by a driver only.

1. COMPOSITION *OF THE JURY*

...

2. *PROTEST JUDGE*

A Protest Judge will hear the protests if so foreseen by the class rules. If not foreseen by the class rules, the UIM may, upon application by the relevant National Authority, appoint a Protest Judge for a particular event. Accommodation and reimbursement of travel expenses of the Protest Judge will be borne by the relevant National Authority and will be handled under the same rules/ in the same way as the reimbursement of the costs of the UIM Commissioner. The protest Judge must be named in the Advance Programme.

3. AUTHORITY AND DUTIES

The Jury / *Protest Judge* sits as long as the event lasts and hears all protests relating to that event. The Jury / *Protest Judge* must decide as soon as possible on all protests presented to it during the event.



402.02 – INTERESTED PARTIES

No member of a Jury / **Protest Judge** who has taken part as a competitor or Official in the race concerning which a judgement is to be given or knows himself to have directly or indirectly an interest in one of the parties involved, may judge the protest. However, **a Protest Judge** or a member of an International Jury shall not be disqualified even if one of the parties is from his/her NA.



508.01 – COCKPIT EVACUATION / IMMERSION TRAINING

...

It is mandatory to wear a helmet of the same type (Open Face, Closed Face) as will be worn during racing.

It is mandatory that the driver/pilot(s) wear the parts of the personal air system that will be worn in the boat.

...

In addition, at race sites or other locations, a referee or inspector may require the driver(s) to:

a) Demonstrate that he/she can adequately extricate himself from a safety team test cell, both on land and under water.

b) Demonstrate that he/she can extricate himself from the cockpit of the boat he intends to drive prior to any event through both hatches, if the boat has multiple escape hatches.



UIM Rule Changes 2025

700

702 – CREW

702.1 - MINIMUM/MAXIMUM LENGTHS AND WEIGHTS

All boats will carry a minimum of two crew members with valid powerboating licenses and of minimum age 18 years.

For Classes 3: 3J the minimum age is 13 years (*age of the driver on 31 December of the relevant year*), 3A and 3B, the minimum age is 16 years.

For Classes 3C and above, the pilot must also have raced in at least three races in a powerboat class with minimum 90 hp.



731 – MINIMUM/MAXIMUM LENGTHS AND WEIGHTS

The weight is ready to race dry, including all safety equipment for ***all Offshore 3 classes*** including crew with their helmets and Racing vests. For control after a race, residual fuel in tanks will be included in the minimum weight.

Slings carried in the boat during the race will count as safety equipment. The boat must be empty of water.

It is allowed to add an infinite amount of solid ballast to gain to the class minimum weight.

In addition, an extra 10% solid ballast can also be added.

...



UIM Rule Changes 2025

700

730 – CLASS 3 – HULLS AND CLASSES

...

730.1

...

Class Class 3 letter	Mono 60 J	Mono 115 A	Open 115 B	Mono 200 X	Open 200 C	Open 400 D	Mono 600 Z	Open 60 S
Cubic Cap.	-	up to 2100 cc	up to 2100 cc	up to 3600 cc	up to 3600 cc	up to 7200 cc	up to 10000 cc	up to 10000 cc
Max Power	60 hp	115 hp	115 hp	200 hp	200 hp	400 hp	600 hp	600 hp
Min Length	4.15 m	5.75 m	5.00 m	6.75 m	6.50 m	7.60 m	8.25 m	8.50 m
Max Length	5.70 m	7.00 m	6.80 m	8.00 m	8.40 m	10.00 m	10.00 m	10.00 m
Mono min weight	530 kg w crew	700 kg w crew	655 kg w crew	1000 kg w crew	865 kg w crew	1570 kg w crew	1970 kg w crew	-
Multi min weight	-	-	730 kg w crew	-	1015 kg w crew	1950 w crew	-	1970 kg w crew
Add kg per m	-	-	50 kg/m	-	65 kg/m	-	-	150 kg/m
Cube length	-	2.35 m	2.35 m	2.75 m	2.75 m	3.60 m	3.60 m	3.60 m
Cube width	-	1.20 m	1.20 m	1.20 m	1.20 m	1.20 m	1.20 m	1.20 m
Cube height	-	0.46 m	0.46 m	0.46 m	0.46 m	0.46 m	0.46 m	0.46 m
Bouyancy								
Mono GPR	150 L	250 L	270 L	370 L	370 L	500 L	500 L	
Mono Sandwich	125 L	130 L	140 L	150 L	150 L	280 L	500 L	
Multi GPR			280 L		380 L	550 L		550 L
Multi Sandwich			180 L		200 L	300 L		300 L



UIM

Rule Changes 2025

(Aquabike)



203 – ENTRIES

203.01 – GENERAL REQUIREMENTS

203.01.01 - AGE

Minimum age limit for racing is 15 years old (except for junior's categories).

For the 2025 racing season, the minimum age for Ski Division GP1 and Runabout GP1 classes is 16 years old.

As from the 2026 racing season, the minimum age for Ski Division GP1 and Runabout GP1 classes will be 17 years old.

As from the 2026 racing season, a 16 years old rider having finished third, second or first in the final standings of a Ski Division GP2 or Runabout GP2 UIM World or Continental Championship will be eligible to participate in a Ski Division GP1 or Runabout GP1 UIM World or Continental Championship.

...



UIM Rule Changes 2025

300

302 – RACING FORMAT

302.01 – UIM GATEGORIES

302.01.05 – CONTINENTAL CHAMPIONSHIP

Ski Juniors GP3.3

Ski Juniors GP3.2

Ski Juniors GP4

Ski Ladies GP1

Ski Division GP4

Ski Division GP3

Ski Division GP2

Ski Division GP1

Ski Veterans GP1 (40 or more years old)

Runabout Juniors GP4

Runabout Ladies GP4

Runabout GP4

Runabout GP3

Runabout GP2

Runabout GP1

Runabout Veterans GP1 (40 or more years old)

Freestyle Free

...



FINNISH SAILING AND BOATING FEDERATION



1922 – 2022



UIM Rule Changes 2025

300

302 – RACING FORMAT

302.02 – DURATION

302.02.02 – CONTINENTAL CHAMPIONSHIP

Ski Juniors GP3.3 12 minutes + 1 Lap

Ski Juniors GP3.2 12 minutes + 1 Lap

Ski Juniors GP4 12 minutes + 1 Lap

Ski Ladies GP1 15 minutes + 1 lap

Ski Division GP4 15 minutes + 1 lap

Ski Division GP3 15 minutes + 1 Lap

Ski Division GP2 15 minutes + 1 Lap

Ski Division GP1 15 minutes + 1 Lap

Ski Veterans GP1 15 minutes + 1 lap

Runabout Juniors GP4 12 minutes + 1 lap

Runabout Ladies GP4 15 minutes + 1 lap

Runabout GP4 1 5 minutes + 1 lap

Runabout GP3 15 minutes + 1 lap

Runabout GP2 15 minutes + 1 Lap

Runabout GP1 20 minutes + 1 Lap

Runabout Veterans GP1 15 minutes + 1 lap

Freestyle Free 3 minutes / rider (Maximum)

...



FINNISH SAILING AND BOATING FEDERATION



1922 – 2022



UIM Rule Changes 2025

300

302 – RACING FORMAT

302.03 – NUMBER OF RIDERS

302.03.02 – CONTINENTAL CHAMPIONSHIP

Ski Juniors GP3.3 Maximum 15 riders

Ski Juniors GP3.2 Maximum 15 riders

Ski Juniors GP4 Maximum 15 riders

Ski Ladies GP1 Maximum 22 riders

Ski Division GP4 Maximum 22 riders

Ski Division GP3 Maximum 22 riders

Ski Division GP2 Maximum 22 riders

Ski Division GP1 Maximum 22 riders

Ski Veterans GP1 Maximum 22 riders

Runabout Juniors GP4 Maximum 15 riders

Runabout Ladies GP4 Maximum 18 riders

Runabout GP4 Maximum 18 riders

Runabout GP3 Maximum 18 riders

Runabout GP2 Maximum 18 riders

Runabout GP1 Maximum 18 riders

Runabout Veterans GP1 Maximum 18 riders

Freestyle Free Maximum 10 riders

...



FINNISH SAILING AND BOATING FEDERATION



1922 – 2022



303 – CIRCUIT DEFINITION

The race Course will be set in an area included approximately between 50.000 and 250.000 m² and will be composed of turn buoys.

~~The minimum number of turn buoys for a world championship circuit race is 25.~~

The minimum number of turn buoys for a **world or** continental championship circuit race is 20.

One or more alternative courses are part of the circuit (minimum 4 buoys - maximum 8)

Figures such as long laps or joker buoys are admitted, procedures to be announced at riders briefing.

The distance between the starting line and the first hole shot should be approximately between 150m and 500m

For Ski Division in lake or river races, up to 3 technical obstacles can be added to the race circuit. (i.e. Log Jump)

A penalty buoy will be placed at the end of the race course.



305.04 – START

The start will be either a quay, jetty, or beach, or a rolling start.

Every rider must be ready for the starting procedure 30 minutes before the scheduled time.

The starting grid for the first moto will be according to the result of Pole Position *or lucky draw*, the following moto(s) will start with the grid determined by the result of the previous one. ***Starting positions cannot be changed between riders.***

It is riders responsibility to maintain their lane until the designated marker buoy placed on the start chute.

Maintaining the lane means keeping their relative position according to the starting grid.



305.04.01 – QUAY, BEACH OR JETTY START

When instructed by the starter, all riders will line up with their AB in the correct order. The starter will show a “2” board (turn your engines on) and check all riders. At this point, ***riders on the starting grid*** have the chance (by raising the hand) to call a 2 minutes countdown if they need. If no rider calls the 2 minutes Countdown the starter will show a “1” board (ready to go) and will start the race from 0 to 5 seconds.

When “1” board is turned on, there is no more possibility to raise a hand and to interrupt the start.

After 2 minutes countdown has been carried out, no more interruptions (by raising the hand) are allowed in second start. ***“2” board signal and “1” board signal might be substituted by equivalent signals (i.e. lights or flags).***

The race can be started by start lights, flag or elastic band. In case of an elastic band start, all A.B. shall be in a line with approximately the same distance between the front of their A.B. and the elastic band.

...



308.06 – FINAL CLASSIFICATION

To be classified in the World Championships, the rider must participate in ~~all races except in cases of force majeure.~~ ***at least one competition that is scored for the World Championship.***



310.01.02 – RACE PENALTIES

Missing a buoy penalty buoy to be taken on same lap

Not respecting penalty buoy 1 Lap

Cutting the course 2 laps

Invading alternate course 2 laps

Not respecting safety demarcation buoys 2 laps

Unsportsmanlike driving 1 Lap or Disqualified*

Dangerous driving 1 Lap or Disqualified*

Ignoring signals 1 Lap or Disqualified*

Disobeying Race Control orders 1 Lap or Disqualified*

*Penalty given according to the Fault

Any of the above penalties may be associated with one or more yellow cards if deemed to be dangerous driving.



310.02.01 – DISQUALIFICATION

Non conformity of race number Disqualified

Aquabike not conform Disqualified

~~Invading other alternate course Disqualified~~

~~Not respecting safety demarcation buoys Disqualified*~~

Not respecting local interdiction areas Disqualified

Aquabike exiting the paddock during the event Disqualified

*In exceptionally dangerous situation the Race Committee will judge upon riders that have missed the buoy for safety reason.



312 – FREESTYLE

...

312.02 - CONDUCT

Each racing day, at riders briefing, the freestyle competitors will present to the Jury the series of figures they intend to perform and the chosen music (where applicable).

The ***start*** is given by blowing a horn and the presentation of the green flag. The ***rider*** indicates to the Jury that he/she is ready to start his/her exhibition by raising an arm or the duration is taken into account since the first figure. ***In case of mechanical problems, the rider that cannot start will be allowed 2 minutes to carry repair before the start of the time. Each rider has one minute to start their routine once they enter in the Jury area.*** To signal to the pilot the remaining 30 seconds, a brief horn blow will be given and the green and red flags will be shown. The end will be indicated by a long horn blow and the presentation of the red flag. A tolerance of 3 seconds is admitted.



UIM Rule Changes 2025

300

312 – FREESTYLE

312.03 - JURY

The jury will be composed of minimum 5 members and 1 timing officer.

The points will be allocated according to the following framework:

On a total of a 100 point:

- 25 points maximum will be allocated for the total number of figures executed 1 point every figure executed
- 40 points maximum will be allocated on the variety of figures according to the following:

Aerials: 4 points every different figure executed

On water: 2 point every different figure executed

- 5 points maximum will be allocated for figures where extremities (no hands etc) are released (1x figure)
- Negative point (-1) for each Minor fall or body contact with water which is not a part of figure.
- 30 points will be allocated by the judges on the quality of execution, the pilot's imagination, the Use of the water plan and the sequence between the figures. Every judge will dispose of 10 points maximum, the highest and the lowest score will be automatically eliminated

The judges may unanimously decide to allocate 10 extra point to the freestyler that is performing new freestyle or a particularly spectacular show.

In Case of Equality the score given by the judges will determine the positions:

The jury will be composed of 5 members. The members of the Jury will be presented to the riders at riders briefing. Judges will score each competitor with a note from 1 to 10 (1 lowest - 10 highest) on the following criterias:

- 1. Combos***
- 2. Variety***
- 3. Transitions/Sequence***
- 4. Quality of the execution***
- 5. Use of the Waterplan***
- 6. Crowd Engagement***
- 7. Coordination with chosen music (if applicable)***
- 8. Difficulty of the routine***
- 9. Use of the time***
- 10. Spread from the proposed routine***

The highest and lowest scores given by the judges for each criteria will be not taken into consideration leaving a maximum score of 300 points.



FINNISH SAILING AND BOATING FEDERATION



1922 – 2022



313 – PARALLEL SLALOM

...

313.02 - CONDUCT

Pole Position must take place on a slalom course. ***If allowed by race schedule time constraints, it includes a test run and 2 timed attempts.***

The top 4 from pole position in each category will participate in the finals at each event. Riders positioned in pole position as 5th will receive points for position 5th position = 16 points, 6th 15 points and so on as per UIM rule 310.03.

The Parallel Slalom will proceed by direct elimination in two rounds, one on each circuit. In case of an equality, a third round will determine the winner ***and the rider with the fastest qualification time will choose track. The rider with the best time will face the rider with the third best time. The rider with the second best time will face the rider with the fourth best time.***

The Starting position for the 3rd round will be decided by flipping a coin.

Final 1/2 4 Pilots

Final 3-4 2 Pilots*

Final 1/1 2 Pilots

~~*The pilots eliminated from the 1/2 Final will dispute the 3rd and 4th place~~

<i>Moto 1</i>	<i>Semifinal 1</i>	<i>Qualified rider 1+3</i>
<i>Moto 2</i>	<i>Semifinal 2</i>	<i>Qualified rider 2+4</i>
<i>Moto 3</i>	<i>Final for places 3-4</i>	<i>The pilots eliminated from the semifinals</i>
<i>Moto 4</i>	<i>Final for places 1-2</i>	<i>Winners from semifinal</i>

Price ceremony at each race, last race for the race and the World Championship.



317 – JETRAID, OFFSHORE AND ENDURANCE

...

317.03 – DEFINITION ENDURANCE

Race at circuit, in several laps and different motos. The circuit must be at least ~~5~~ **3** km (minimum) and maximum 20 km. The number of motos is between 2 and 5 conducted in minimum 2 days. The total time of the each moto is a minimum of ~~40~~ **30** minutes and maximum of 180 minutes. Departure, arrival and refuelling are in the same place. Ski division will race for half the time and track.

A specific set of rules can be created for each event according to the peculiarity of the different venues. these rules must be posted in the Advance Notice/Seabook.

Other not competitive stretches may be added to the various motos and award points, in accordance to the Advance Notice/Seabook.

Where not specified differently in the Advance Notice/Seabook circuit rules apply.



501.01 - SKI DIVISION CATEGORY GP4

...

501.01.01 - MAIN CRITERIA

Aquabike competing in ~~this category~~ **the Ski Division GP4 category** must conform to the following criteria:

- 01) The maximum engine cubic capacity: Atmospheric, 4 Strokes, 1100 cc
- 02) Dry weight must be greater than 160 kg
- 03) ~~Hull~~ Length **overall** cannot exceed 250 cm
- 04) ~~Hull~~ Width **overall** must be between 50 cm and 80 cm



501.02 - SKI DIVISION CATEGORY GP3

...

501.02.01 - MAIN CRITERIA

Aquabike competing in ~~this category~~ **the Ski Division GP3 category** must conform to the following criteria:

01) The maximum engine cubic capacity: Atmospheric, 2 Strokes, 800 cc

02) The maximum OEM engine power: 85 Hp

03) Dry weight must be greater than 135 kg

04) ~~Hull~~ Length **overall** cannot exceed 250cm

05) ~~Hull~~ Width **overall** must be between 50 cm and 78 cm

06) ~~07)~~ Hull Height **overall** cannot exceed 86 cm measuring **measured** from the lowest point of the hull to the handlepole in its position rested against the hood.

07) ~~08~~ The handle pole must be mounted in front of the engine compartment and must have a minimum movement of 75 degrees.



501.03 - SKI DIVISION CATEGORY GP2

...

501.03.01 - MAIN CRITERIA

Aquabike competing ~~in this category~~ **the Ski Division GP2 category** must conform to the following criteria:
must conform to the following criteria:

01) The maximum engine cubic capacity:

- a) Atmospheric 2 Strokes 850 cc
- b) Atmospheric 4 Strokes 1620 cc
- c) Turbo 750 cc

02) Dry weight must be greater than

- a) 135 kg for atmospheric 2 Strokes
- b) 165 kg for atmospheric 4 Strokes

03) ~~Hull~~ length **overall** cannot exceed 280 cm

04) ~~Hull~~ width **overall** must be between 50 cm and 78cm

05) ~~Hull~~ height **overall** cannot exceed 86 cm **measured** ~~measuring~~ from the lowest point of the hull to the handlepole in its position rested against the hood.

06) The handle pole must be mounted in front of the engine compartment and must have a minimum movement of 75 degrees.



501.04 - SKI DIVISION CATEGORY GP1

...

501.04.01 MAIN CRITERIA

Aquabike competing in ~~this category~~ **the Ski Division GP1 category** must conform to the following criteria:

01) The maximum engine cubic capacity:

- a) Atmospheric 2 Strokes 1300 cc
- b) Atmospheric 4 Strokes 1620 cc
- c) Turbo 4 Strokes 1000 cc

02) Dry weight must be greater than 135 kg

03) Hull length **overall** cannot exceed 280 cm

04) Hull width **overall** cannot exceed 85 cm

05) Hull height **overall** cannot exceed 86 cm measuring from the lowest point of the hull to the handlepole in its position rested against the hood.

06) The handle pole must be mounted in front of the engine compartment and must have a minimum movement of 75 degrees



502.01 - RUNABOUT CATEGORY GP4

...

502.01.01 - MAIN CRITERIA

Aquabike competing in ~~this category~~ **the Runabout GP4 category** must conform to the following criteria:

- 01) The maximum engine cubic capacity: Atmospheric 4 Strokes 950 cc
- 02) Dry weight must be greater than 180kg
- 03) Hull length **overall** cannot exceed 320 cm
- 04) Hull width **overall** must be between 96.5 cm and 127 cm



502.02 - RUNABOUT CATEGORY GP3

...

502.02.01 - MAIN CRITERIA

Aquabike competing in ~~this category~~ the **Runabout GP3 category** must conform to the following criteria:

01) The maximum engine cubic capacity:

a) Atmospheric 2 Strokes 1300 cc

b) Atmospheric 4 Strokes 2000 cc

02) The maximum engine power: 200 Hp

03) Dry weight must be greater than 216 kg

04) ~~Hull~~ length **overall** cannot exceed 360 cm

05) ~~Hull~~ width **overall** must be between 96.5 cm and 127 cm

06) For Endurance only, the ~~Hull~~ **overall** length cannot exceed 394 cm



502.03 - RUNABOUT CATEGORY GP2

...

502.03.01 - MAIN CRITERIA

PWC competing in the Runabout **GP2 category** must conform to the following criteria:

01) The maximum engine cubic capacity:

- a) Atmospheric 2 Strokes 2600 cc
- b) Atmospheric 4 Strokes 2600 cc
- c) Supercharged 4 Strokes 2000 cc

02) Dry weight must be greater than 310 kg

03) ~~Hull~~ Length **overall** cannot exceed 360 cm

04) ~~Hull~~ Width **overall** must be between 96 cm and 127 cm

05) For Endurance only, the **overall** ~~Hull~~ length cannot exceed 394 cm



502 – RUNABOUT

...

502.04 - RUNABOUT CATEGORY GP1

01) Intended to promote interest in personal watercraft Competition with a higher degree of modification. Watercraft competing in this class must conform to the specifications which follow.

02) It is the sole responsibility of the rider to select components, materials and/or fabricate the same so that the watercraft operates safely in Competition.

03) Sound level shall not exceed 90 dB(A) at 24 m.

04) Fuel must be in conformity with the criteria defined by art. 503

05) Ballast weight may be added prior to Competition to meet the required weight limit (see 502.04.02-07).

06) The weight control will be done by the fuel tank empty and all other liquids at the race level.

07) Turbo housing and exhaust manifold must be of the full circulating water type at all times when the engine is running.

08) All aquabikes, even if prototypes, must have a HIN number and a dimensional drawing with the measures. All these must be inserted in the logbook to obtain UIM homologation



502.04 - RUNABOUT CATEGORY GP1

...

502.04.01 - MAIN CRITERIA

PWC competing in the Runabout **GP1 category** must conform to the following criteria:

01) The maximum engine cubic capacity:

a) Atmospheric 2 Strokes 2600 cc

b) Atmospheric 4 Strokes 2600 cc

c) Turbocharged/Supercharged 4 Strokes 2000 cc

02) Dry weight must be greater than 300 kg

03) ~~Hull~~ length **overall** cannot exceed 360 cm

04) ~~Hull~~ width **overall** cannot exceed 127 cm

05) For Endurance only, the ~~Hull~~ length **overall** cannot exceed 394 cm



506 - PERSONAL EQUIPMENT

...

02) A life jacket will be worn by all pilots and at all times when on the water. It is required that the life jacket shall be designed for racing. ***Riders life jacket must be under EN ISO 12402-5:2020 certification or meet the current national authority standards.*** Every pilot shall verify that his/her flotation equipment to function properly when requested.

03) During the tests, the training and the races, it is mandatory to carry an independent dorsal back protection ***(this back protection must have a minimum CE EN 1621-2:2014 level 1 or 2 certification or meet the current national authority standards. Stage 2 CE standard is recommended for better protection against impact)***, goggles ***(should follow safety code - EN 1938:2010)***, closed footwear and gloves. For runabout: leg protection is also required. ***Riders losing gloves or goggles during any session will be permitted to carry on racing.***

...



UIM Rule Changes 2025

500

ABBREVIATIONS / GLOSSARY OF TERMS

Finish line ***Imaginary line in front of race control/timing. This line marks the start/ending line for each lap of the circuit. It may be limited by 2 racing buoys. (The rider passing one of these buoys on the wrong side misses a buoy, does not miss the finish line)***



FINNISH SAILING AND BOATING FEDERATION



1922 – 2022



UIM Rule Changes 2025

CODE OF ETHICS
ANTI-DOPING RULES
ENVIRONMENTAL CODE



FINNISH SAILING AND BOATING FEDERATION



1922 - 2022



Kansalliset säännöt 2025

Tulossa uutena: Aloittajalisenssi (Juniori)
(Kansalliset säännöt vielä työn alla, 11.3.2025)



FINNISH SAILING AND BOATING FEDERATION



1922 - 2022

